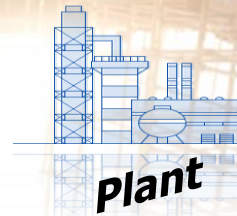
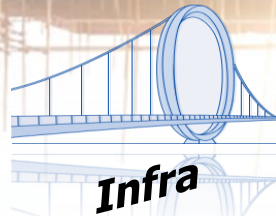




JL JEIL ENG CONSTRUCTION CO., LTD.



March. 25th. 2019



INTRODUCTION OF OUR COMPANY

I wish you all the happiness of your company.

We, **Jeil Eng Construction Co., Ltd.(SIC Korea JEIL)** started our business in March 1990, and have been continuously engaged in the dismantling of equipment, and revamping in the field of plant facilities as **POSCO and POSCO E&C**, we are ready for the overseas transfer of **Pohang FINEX** facility and **Gwangyang CEM** facility, which are core facilities of next-generation steel technology, are ready for the sale, dismantling and **DKS #2 Plate Mill**, and are now in the **START-UP** stage.

As for the sale of **KG Dongbu Steel Dangjin Hot Rolled Mill**, dismantling of equipment, and relocation project, we will inform you of the performance of Plant Equipment Project performed by **Jeil Eng Construction Co., Ltd.**

Our company promises to do our best to ensure that the above **KG Dongbu Steel Dangjin Hot Rolled Mill** is dismantled and relocated successfully.

March. 25th. 2019

JEIL ENG CONSTRUCTION CO., LTD.



CONTENTS



- 1. INTRODUCTION -***
- 2. CONSTRUCTION PLAN***
- 3. SIGNIFICANT CONSTRUCTION RESULT***
- 4. A HYPOTHETICAL PLAN***
- 5. PLAN FOR EQUIPMENT USE***
- 6. PROGRESS CONTROL PLAN***
- 7. SAFETY MANAGEMENT PLAN***
- 8. ENVIRONMENTAL MANAGEMENT PLAN***
- 9. MAJOR REFERENCE FOR DISMANTLING WORKS***
- 10. ROUGH MAP TO COMPANY***
- 11. MAJOR CLIENTS***



1. INTRODUCTION



1) CEO's Greetings

Dear all,

Thank you for your continued encouragement and support. SIC KOREA JEIL Co., Ltd is making great contribution to the development of the domestic and overseas construction industry based on the people with the best technology and construction ability in Korea, the equipment and the efficient system. We always try to provide the best quality and service with our customers' We are **pursuing.**

. In March 1990, our company, which started as Jeil Engineering, has continued to develop technology for demolition and dismantling of structures and has built up trust and reputation as a leading company in the same field

Now, we have established a mid- to long-term management strategy to become a world-class demolition and dismantling enterprise, and we are investing heavily in training and development of new technology and securing advanced equipment as part of its detailed implementation plan.

We will do our best to give priority to customers even in the newly specialized field based on the technology that we have been keeping up to now.

CEO : Jong Bum LEE

1. INTRODUCTION



2) Company Information

Company Name	JEIL ENG CONSTRUCTION CO., LTD. (SIC KOREA JEIL)
President	Lee Jong Bum
Address	#911, B-dong, 53 Mapodaero Mapogu, Seoul
Establishment	March. 1990
Business registration Number	105 – 81 - 67493
Business Condition	Construction, Manufacture, Whole sale and retail

3) Main Business

Concrete Structure dismantle	Machine Equipment	Asbestos demolish	Manufacture
<ul style="list-style-type: none"> <input type="radio"/> Building demolish <input type="radio"/> Demolish- Civil structure/ Marine/ underwater/ Bridge/ Overpass <input type="radio"/> Demolish- Industrial equipment/Chemical Plant /Power Plant <input type="radio"/> Demolish- Remodeling 	<ul style="list-style-type: none"> <input type="radio"/> Building <input type="radio"/> Plant Equipment install <input type="radio"/> Special business <ul style="list-style-type: none"> -Inner Flue Manufacture & install -Chimney Maintenance Consulting & Eng' 	<ul style="list-style-type: none"> <input type="radio"/> Asbestos pre-survey <input type="radio"/> Asbestos demolish <input type="radio"/> Waste Disposal 	<ul style="list-style-type: none"> <input type="radio"/> Steel Struture manufacture/install <input type="radio"/> Chimney Inner Flue manufacture <input type="radio"/> Renewable Energy steel structure manufacture
<input type="radio"/> Telephone	Tel) 02 – 393 – 7875~7 , 02 – 332 – 8430 Fax) 02 – 365 -1839 , 02-332-8432		
<input type="radio"/> E - mail	Jeil7875@nate.com		
<input type="radio"/> Website	http:// www.jeileng.com		

1. INTRODUCTION



Business

SPECIALIZED in DISMANTLING CONSTRUCTION



Architecture



Dismantling offshore structure



Special Purpose Structure



Cheonggye Overpass

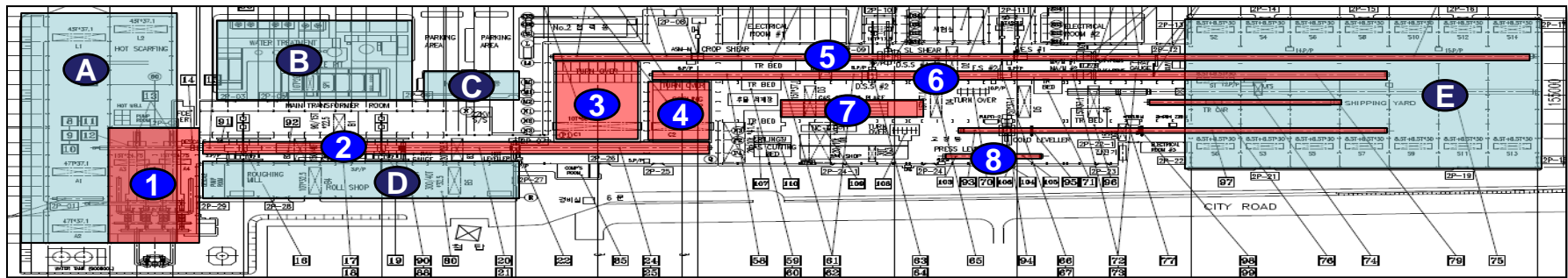
4) Status of Major Construction Machinery

No	Name	Nos.	Spec.	Maker
Machineries for Dismantling Purpose	Excavator	4	SOLAR, MX255	Deawoo, Samsung
	TS-Crusher	4	500 RCD	JAPAN, USA
Cutting & Dismantling	Diamond Wire Saw Sys.	5	CR-3, AZ-SRZ	Sweden
	Crusher Breaker	5	200, 320, 400mm	Japan
	Oil Cutter	4	150, 250mm	Sweden
	Engine Cutter	6	12, 16, 18HP	Japan
	Hydraulic Crusher	4	4B-3000, CP-60	Sweden
Core Drill	Electric & Hydraulic	12	-	HILTI, JAPAN

2. CONSTRUCTION PLAN



DONGKUK No.2 PLATE MILL (Capa: 2 Million ton / Year, Operation : Dec. 1997 ~ Aug. 2015)



Main Specification

	<i>Item</i>	<i>Description</i>
SLAB	Thickness (mm)	130 ~ 300
	Width (mm)	1,200 ~ 2,200
	Length (mm)	2,300 ~ 4,000
PLATE	Thickness (mm)	5 ~ 80
	Width (mm)	1,200 ~ 4,100
	Length (mm)	~ 25,000

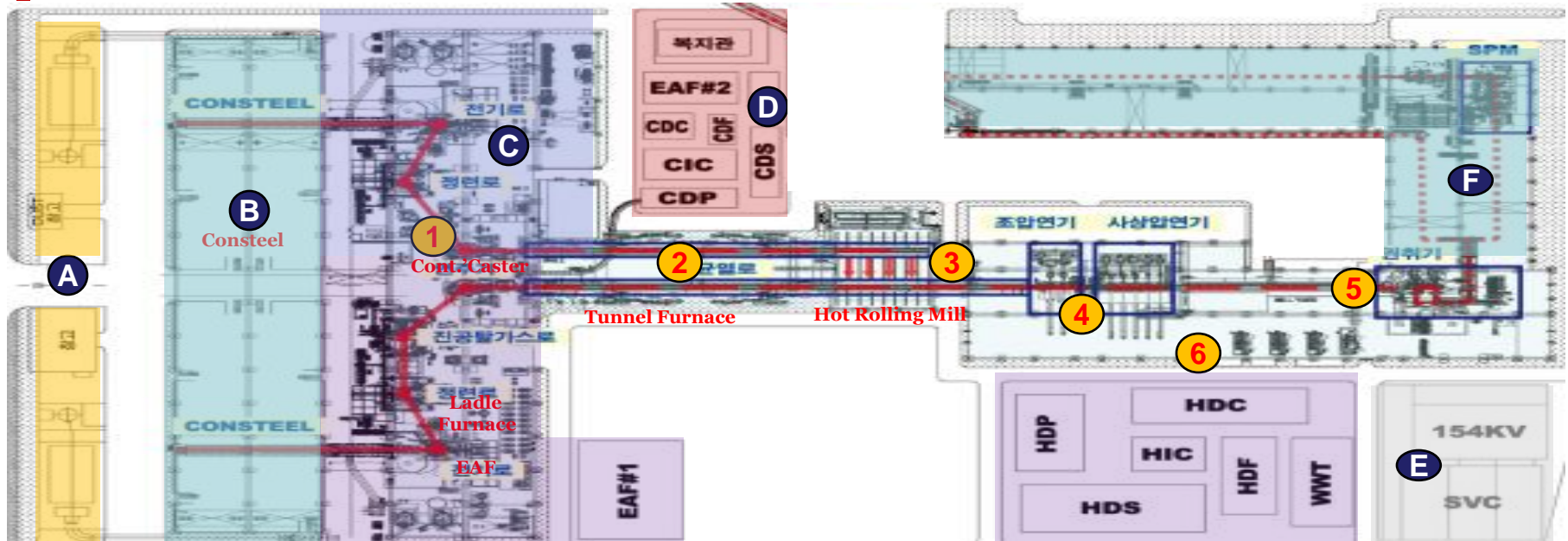
Main Equipment List

<i>Item</i>	<i>Description</i>	<i>Item</i>	<i>Description</i>
1	Reheating Furnace	A	Slab Yard
2	Roughing & Finishing Mill	B	Water treatment
3, 4	No.1, 2 Cooling Bed	C	Sub Center
5, 6	No.1, 2 Shear Line	D	Roll Shop
7	Gas Cutting Bed	E	Warehouse
8	Press Leveler		

2. CONSTRUCTION PLAN



KG Dongbu Steel Dangjin Hot Rolled Mill (Capa: 3 Million ton / Year, Operation : July. 2009 ~ Nov. 2014)



Main Specification

Item	Description	
Hot Coil	Thickness (mm)	1.2 ~ 16.0
	Width (mm)	900 ~ 1,650
	Weight (Ton)	Max 30
	Inside Diameter(mm)	762
	Outside Diameter(mm)	Max 2,100

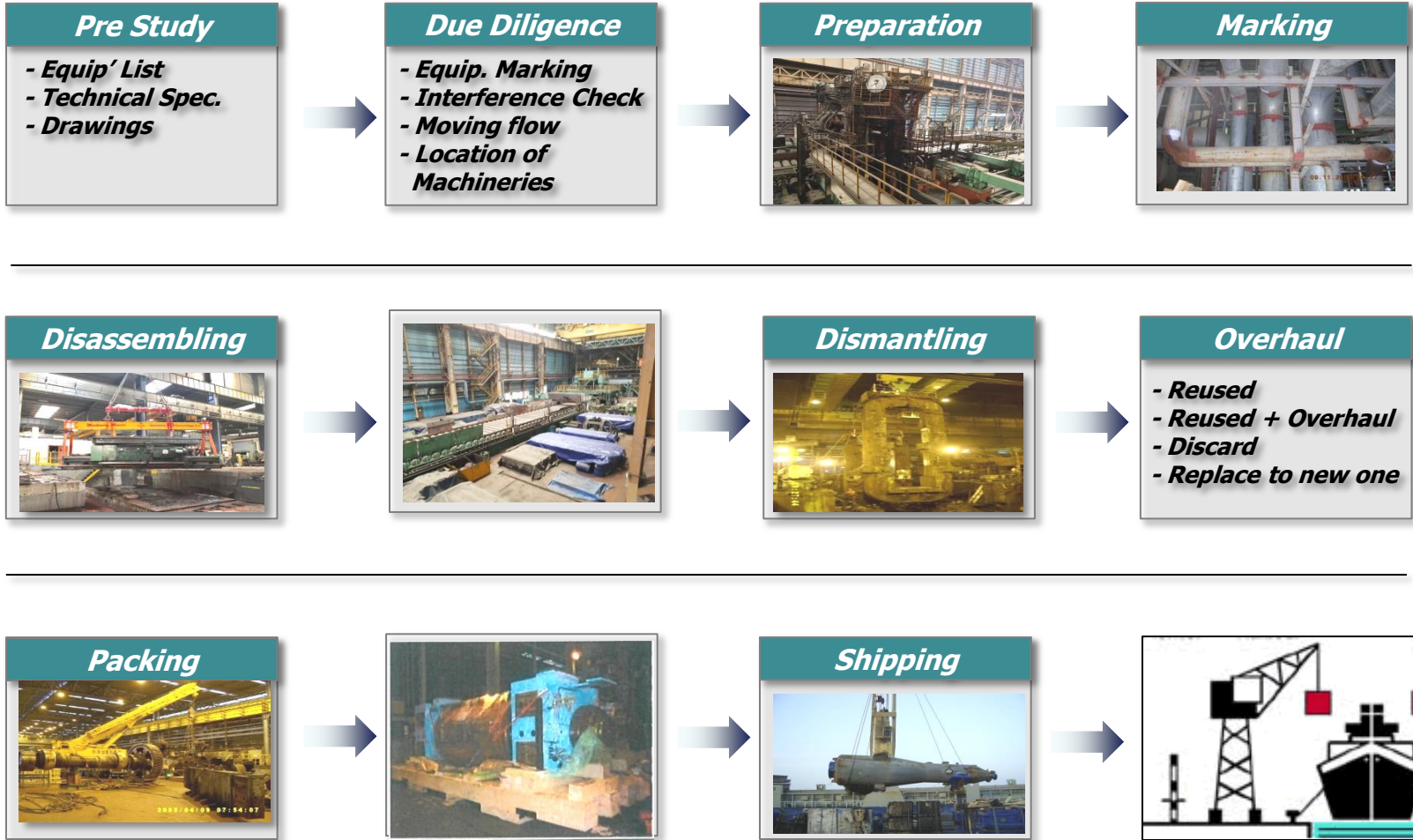
Main Equipment List

Item	Description	Item	Description
1	Cont' Caster	A	Dust Collector
2	Reheating Furnace	B	Consteel
3	Hot Rolling Mill	C	EAF(EAF, LF, Ladle Frnace)
4	F. Mill, R. Mill	D	WTP
5	DC, Downcoiler	E	154kv Elec
6	Roll Shop	F	SPM

2. CONSTRUCTION PLAN



Dismantling Work Procedure



2. CONSTRUCTION PLAN



Detailed demolition plan.

-Electrical equipment and Cable demolition



Block power supply(VCB, ACB)
And prohibit arbitrary operation



LCP Power off Confirmation and
cable From To check



Check whether the equipment is energized
by using non-contact type detector
after wearing insulation protection



Return to designated place or
waste treatment



Steel material demolition



Cable dismantling

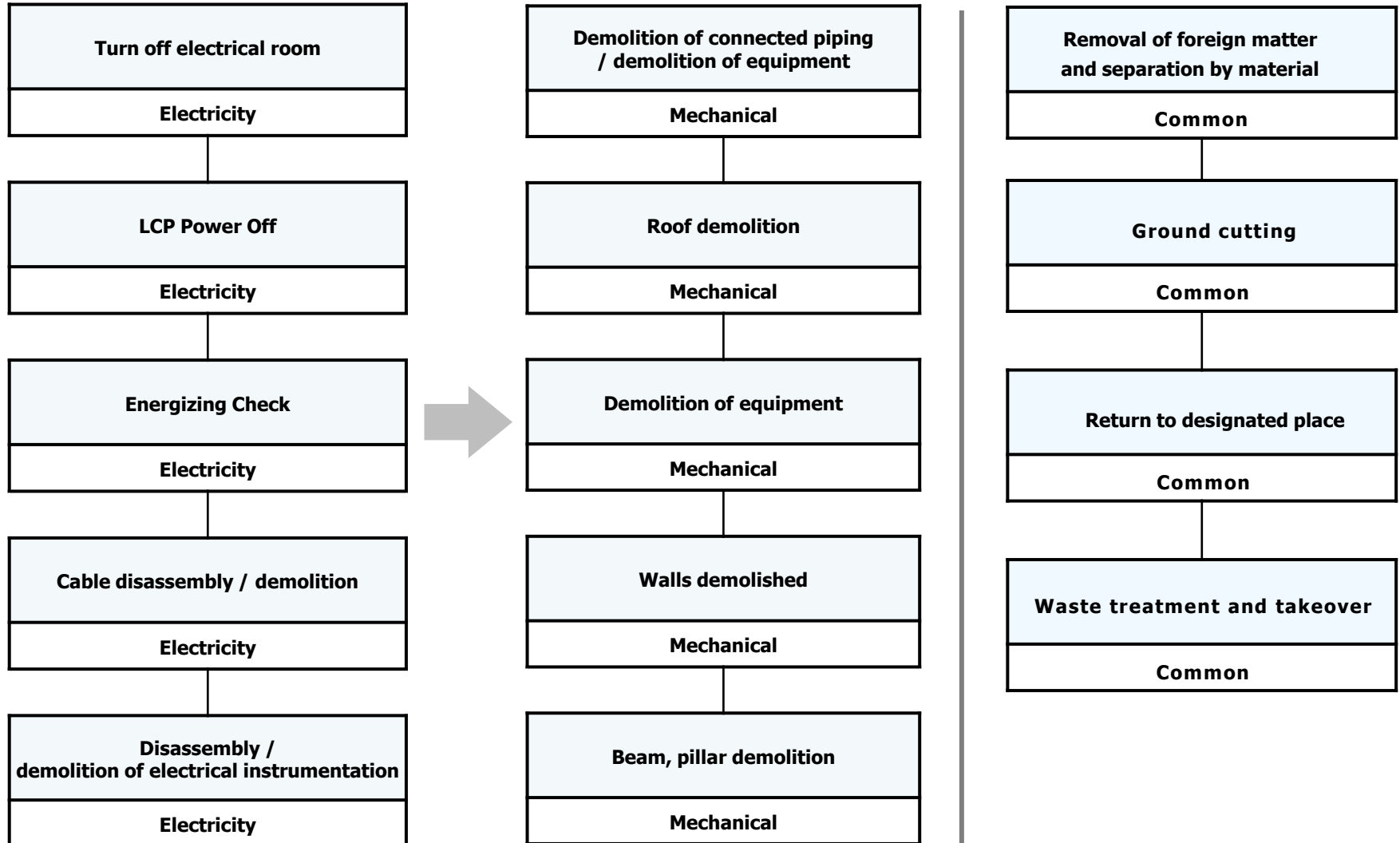


Separate cables and electrical
components from the terminal block

2. CONSTRUCTION PLAN



Order of demolition by type of work



2. CONSTRUCTION PLAN



Major Points for Dismantling Works

No	Items	Description
1	Marking	<ul style="list-style-type: none"> • <i>Marking & Numbering (Remove/Reuse/Overhaul) at Equipment List</i>
2	Equipment to be relocated	<ul style="list-style-type: none"> • <i>Temporary supporting fabrication for Dismantling, Transportation and Placing</i> • <i>To be dismantled as per Welding line and Flange Connection (Main body not to be damaged)</i> • <i>Dismantling size to be considered according to Packing, Transportation and Installation</i> • <i>Oil and others to be removed</i> • <i>Inner and outer such as Lagging of Vessel/Bin/Tank/Duct/Pipe to be removed.</i> • <i>Foundation preparation work for Heavy machineries (Crane and etc.)</i> • <i>Guide, Fence and etc. for Safety</i> • <i>Loading and Unloading of Materials for Overhaul</i> • <i>Photo before/after Dismantling</i>
3	Remove Equip. (Uselessness & Interference)	<ul style="list-style-type: none"> • <i>Oil and others to be removed</i> • <i>Inner and outer such as Lagging of Vessel/Bin/Tank/Duct/Pipe to be removed.</i> • <i>Foundation preparation work for Heavy machineries (Crane and etc.)</i> • <i>Guide, Fence and etc. for Safety</i> • <i>Cables to be removed and sold out</i>
4	Permission	<ul style="list-style-type: none"> • <i>Government approval and permission for Dismantling Construction</i>
5	Painting	<ul style="list-style-type: none"> • <i>If necessary</i>
6	Scrap	<ul style="list-style-type: none"> • <i>To be removed and sold out</i>
7	Waste	<ul style="list-style-type: none"> • <i>General : To be removed</i> • <i>Special : To be removed (But government permission to be done by Clients.)</i>
8	Erection SV	<ul style="list-style-type: none"> • <i>If necessary (SV to be dispatched at the site for erection)</i>
9	Storage Yard	<ul style="list-style-type: none"> • <i>Yard or Warehouse</i>
10	Packing	<ul style="list-style-type: none"> • <i>Packing for ocean transportation</i>
11	F.O.B	<ul style="list-style-type: none"> • <i>Dongbu Steel Pier</i>
12	Engineering	<ul style="list-style-type: none"> • <i>Engineering works for Dismantling</i>

2. CONSTRUCTION PLAN



Calculated Facilities weight

(Supplied by Dongkuk Steel)				3-Mar-2017
Facilities	Index	Q'ty	Weight(ton)	Note
Heating Furnace Area	A	1 set	6,685.6	
Heating Furnace Rafractory		1 set	4,131.0	Additional items
RM Area	B	1 set	3,540.8	
FM Area	C	1 set	4,872.6	
H/L & Cooling Bed	D	1 set	10,917.8	
No1 Shear Line	E	1 set	3,282.9	
No2 Shear Line	F	1 set	2,872.8	
Gas Cutting Bay	F	1 set	289.9	
UST Line	M	1 set	911.0	
Levelling Line(교정동)	G	1 set	1,110.0	
Other facilities(부대설비)	-	1 set	770.5	Descale Station & Including knife
Roll Shop	-	1 set	4,227.5	Calculate transportation costs only
Main Spares	-	1 set	2,530.2	
Utility Systems	S	1 set	421.1	Waste piping: Including machine. Interconneting: Excluded
Motors		1 set	1,553.4	RM/FM Main Motor 외
Water Treatment System		1 set	347.6	
Over head crane		Set	4,182.0	L,A,B,C,D,S,SD Add
sub Total			52,646.7	
Electrical panel		1 set	183.0	Materials provided by Dongkuk Steel Mill
Electric Cable (Power, Control, Communication)		1 set	1,000.0	
Transformer		1 set	345.0	
sub Total			1,528.0	
Total Equipments Weight			54,174.7	

Steel plate for factory floor, safety deck type, gas cutting plate is excluded from the weight of equipment (except for disassembly).

2. CONSTRUCTION PLAN



Equipment List for Marking (Sample)

<i>Item No.</i>	<i>Equipment</i>	<i>Demolition</i>	<i>Reuse</i>	<i>New</i>	<i>Modification</i>
<i>Mechanical Equipment</i>	<i>Reheating Furnace</i>	✓	✓	✓	✓
	<i>Roughing Mill / Finishing Mill</i>	✓	✓		
	<i>Hot Leveler</i>	✓	✓		
	<i>Cooling Bed</i>	✓	✓		
	<i>Crop Shear, Double Side Shear End Shear</i>	✓	✓		
	<i>Ultrasonic Test</i>	✓	✓		
	<i>Press Leveler</i>	✓	✓		
	<i>Roll Shop</i>	✓	✓		
	<i>Water Treatment</i>	✓	✓	✓	
	<i>Crane</i>	✓	✓	✓	
<i>Electrical Equipment</i>	<i>Transformer</i>	✓	✓	✓	✓
	<i>Motor</i>	✓	✓	✓	✓
	<i>Special Instrument</i>	✓	✓	✓	✓
<i>Common</i>	<i>Pipe & Cable, Anchor Bolt etc.</i>	✓		✓	

*** The detail equipment list to be made as per the result of Due Diligence**

3. BUSINESS LINE & SIGNIFICANT CONSTRUCTION RESULT



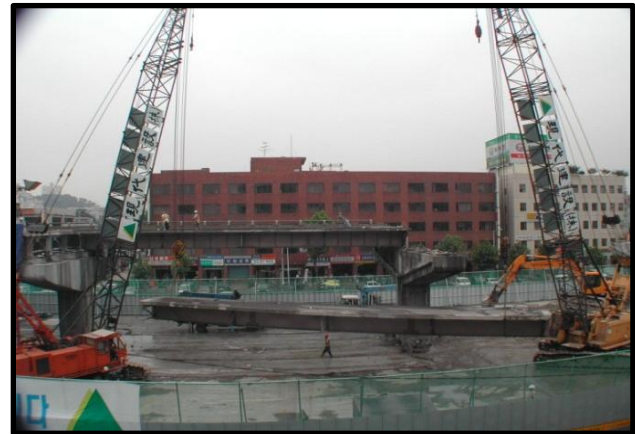
Civil Structure Demolish

Bridge / Port / Underwater Structure / Overpass / Overhead Walkway

Provide suitable method of construction for demolish/dismantling of special structure and downtown construction based on the latest demolish method and high-tech system.



Cheonggyecheon restoration construction (Zone 1)



Cheonggyecheon restoration construction (Zone 2)



Cheonggyecheon restoration construction (Zone 3)

3. BUSINESS LINE & SIGNIFICANT CONSTRUCTION RESULT



Civil Structure Demolish

Bridge / Port / Underwater Structure / Overpass / Overhead Walkway

Provide suitable method of construction for demolish/dismantling of special structure and downtown construction based on the latest demolish method and high-tech system.



Gimpo Airport Top-light



Cheonggyecheon restoration BOX-type GIRDER dismantle



Pohang New port No.1 deck #14



Chuja-do New Port Breakwater

3. BUSINESS LINE & SIGNIFICANT CONSTRUCTION RESULT



Industrial Equipment Demolish/Dismantle

Steel Plant Equipment / Chemical Plant / Power Plant

Provide suitable method of dismantling for relocation and replacement of time-worn equipment based on the latest demolish method and high-tech system.



Posco Gwangyang Plant EGL STL'/STR' -Demolish

Posco Gwangyang Plant EGL Body Demolish

3. BUSINESS LINE & SIGNIFICANT CONSTRUCTION RESULT



Industrial Equipment Demolish/Dismantle

Steel Plant Equipment / Chemical Plant / Power Plant



Posco Pohang Plant Test-CC Line-Dismantle



Posco Pohang Plant Test-CC Line Dismantle



Posco Pohang Plant Test-CC Line-Dismantle



Posco Pohang Plant #1FINEX

3. BUSINESS LINE & SIGNIFICANT CONSTRUCTION RESULT



Industrial Equipment Demolish/Dismantle

Steel Plant Equipment / Chemical Plant / Power Plant



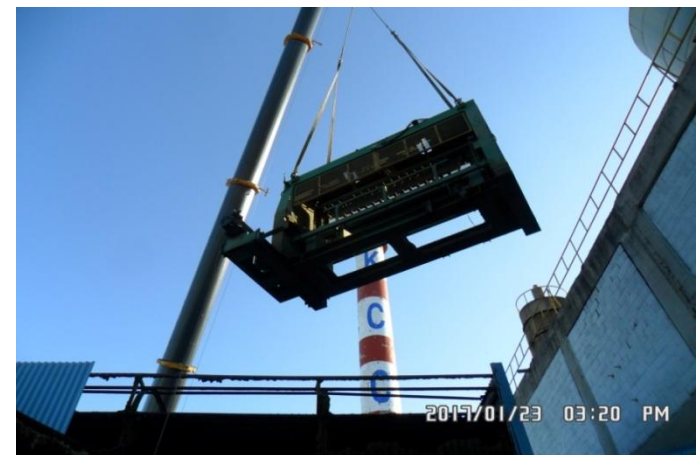
Ulsan Dongoh Chemical-Dismantle



Ulsan Dongoh Chemical-Dismantle



Ulsan Dongoh Chemical-Dismantle



KCC Eonyang Plant -Dismantle

3. BUSINESS LINE & SIGNIFICANT CONSTRUCTION RESULT



Industrial Equipment Demolish/Dismantle

Steel Plant Equipment / Chemical Plant / Power Plant



Seoul Thermal Power Plant



Posco Energy Incheon LNG Power Plant No.1,2 Dismantle

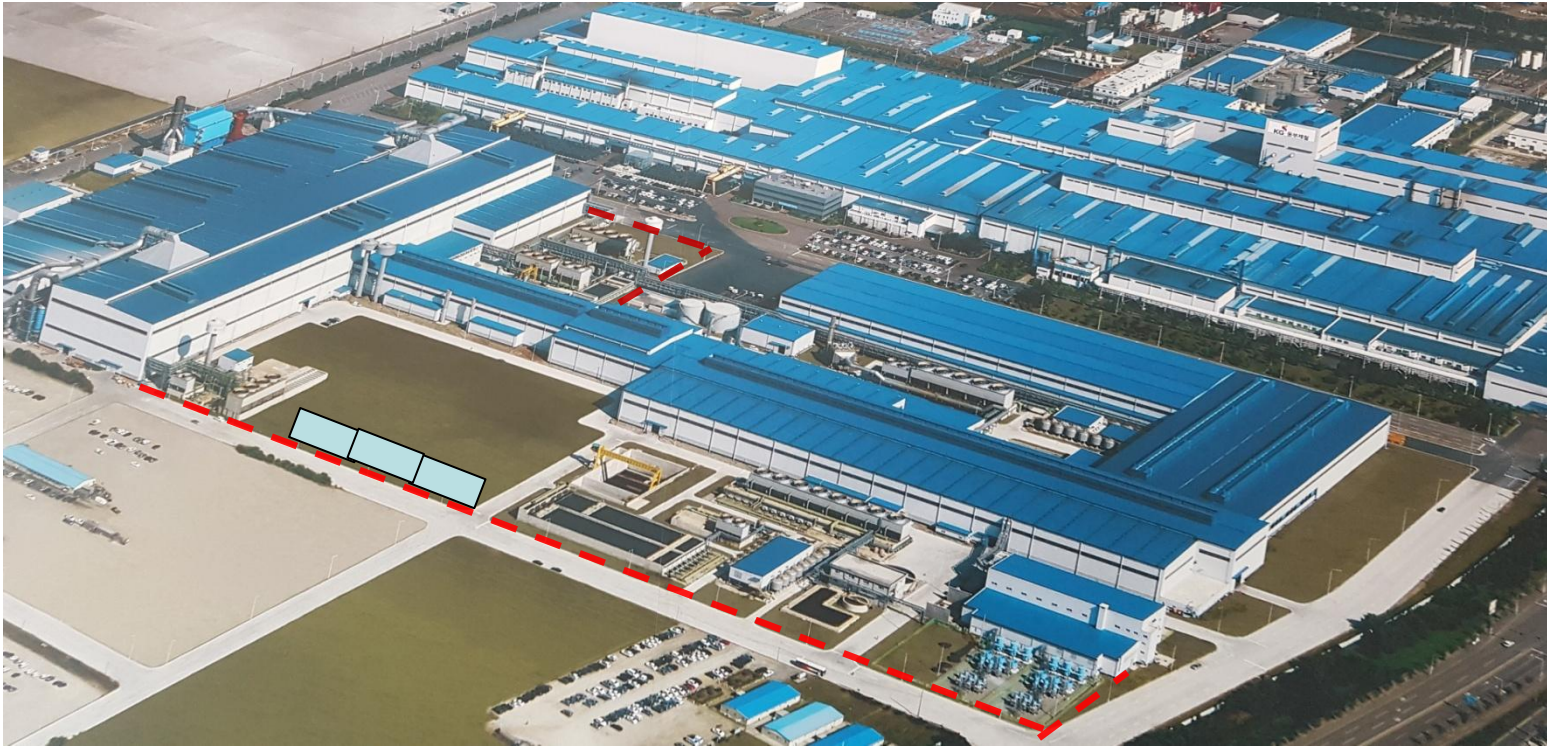






Posco Energy Incheon LNG Power Plant No.1,2-Dismantle




4. A HYPOTHETICAL PLAN



A hypothetical plan



sign	name	Remarks
	EGI Fence	--. Height 2.5M
	RPP Fence	--. Height 3.0~4.0M
	container	--. Container on-site office 5 warehouse, 1 meeting room 4 container containers for business owners, 2 warehouses for warehouses
	Hypothetical toilet	

sign	name	Remarks
	Temporary wheel lock	▶ Establishment of equipments, entrance and maintenance facilities
	Temporary cut sheet	▶ Divisional utilization
	A temporary yard	▶ Temporary Waste and Recyclables

5. A HYPOTHETICAL PLAN



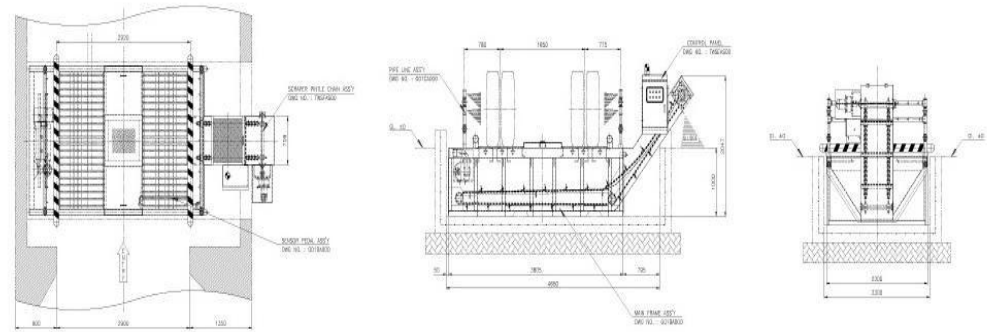
Automatic Wheel Washer Installation

TAEKYUNG AUTOMATIC TIRE WASH
1600-257

입체적 세륜수 분사 / 저렴한 유지비용 / 세륜기 전용부품

TK-G01

GREATING TYPE

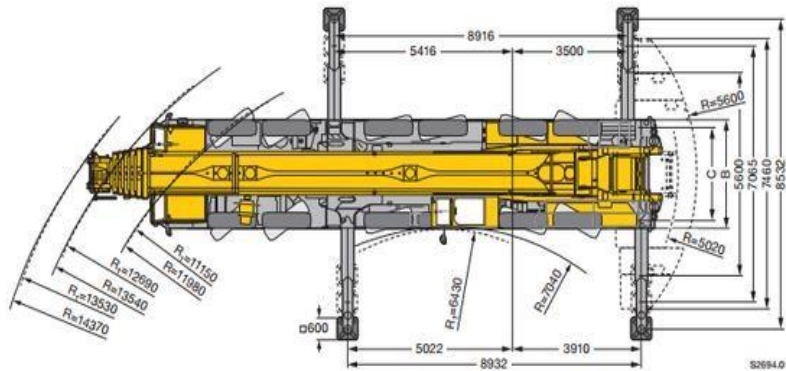
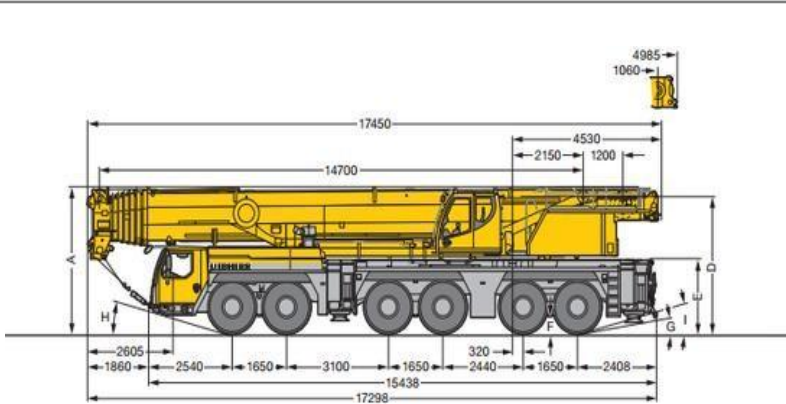


SPECIFICATION	
Washing Time	Max. 45 sec.
Capa	Max. 1,400 Cars / Day (8 hrs / Day)
Operator	Not required (Full Auto)
Make-up water	Recirculation (Closed Circuit)
Sludge Discharge	Automatic (by Conveyor)
2nd Pollution	None
Weight	4.5 ton
OTHER INFORMATION	
Dimension	Width : 2,200 Length : 5,340 Height : 1,000
Applied Vehicle	Less than 2,800 (W)
Voltage	220/380/440
Power	11.8Kw

5. PLAN FOR EQUIPMENT USE



Hyd' Crane 300Ton



R₁ = Allradlenkung - All-wheel steering - Direction toutes roues - Tutti gli assi sterzanti - Dirección en todos los ejes - Поворот всех колесных

⊙	Maße - Dimensions - Encombrement - Dimensioni - Dimensiones - Размеры mm									
	A	A	B	C	D	E	F	G	H	I
385/95 R 25 (14.00 R 25)	3950	125 mm ¹ 3825	3000	2610	3685	1960	350	8"	12"	14"
445/95 R 25 (16.00 R 25)	4000	3875	3000	2550	3735	2010	400	9"	14"	15"
525/80 R 25 (20.5 R 25)	4000	3875	3100	2570	3735	2010	400	9"	14"	15"

¹ abgelenkt - lowered - abbasse - abbassato - suspensión abajo - uazov otkazano

Traglasten
Lifting capacities
Forces de levage - Portate
Tablas de carga - Грузоподъемность

m	EN																	
	14,7 m	19,6 m	24,4 m	29,3 m	34,2 m	39 m	43,9 m	48,7 m	53,6 m	58,5 m	63,3 m	68,2 m	73,1 m	77,2 m	78 m			
3	300	135,5														3		
3,5	183	135,5	135,5													3,5		
4	173,5	135,5	135,5	135,5												4		
4,5	160,4	135,5	135,5	135,5	112,6											4,5		
5	147,8	135,5	135	129,6	112,2	89,9										5		
6	132,1	126	124	117,3	110,1	89,1	72,3									6		
7	119,6	112,6	113,3	106,9	101,7	87,7	71,6	59								7		
8	105,9	100,3	101,2	98,6	93,2	86,3	70,9	58,6	46,3							8		
9	93,6	90,1	91	90,8	86,3	83,2	70,1	58,1	46,1	37,2						9		
10	83,6	81,5	82,4	82,7	80,4	77,9	69,2	57,7	45,8	37,1						10		
11	75,4	74	74,8	75,2	74,8	72,9	68,2	57,2	45,6	37	29,9					11		
12	63,7	63,7	68,3	68,6	68,4	68,4	65,2	56,4	44,5	36,6	29,7	24,5				12		
13			62,4	62,7	62,6	63,4	61,4	55,5	43,1	36,2	29,5	24,3	19,8			13		
14			57,9	57,6	58,7	58,3	57,5	54,4	41,4	35,4	29,2	24,2	19,8			14		
16			49,7	50,4	50,4	49,9	49,3	49,7	38	33,3	28,3	23,8	19,5	16,5	13,7	13,3	16	
18				43,8	43,9	43,4	44,4	43,7	35	30,8	26,7	23	18,9	16,1	13,6	13,3	18	
20				38,4	38,4	37,9	39	38,3	32,2	28,6	25	21,9	18,3	15,6	13,3	13,1	20	
22						27,2	33,9	34,7	34,5	33,8	29,7	26,4	23,4	20,7	17,5	15,1	12,9	22
24							30,3	31,2	30,7	30,1	27,4	24,5	21,9	19,5	16,7	14,5	12,4	24
26								27,1	28,1	27,6	26,9	25,4	22,7	20,4	18,4	16	13,8	26
28									25,4	24,9	24,2	23,3	21,1	19,1	17,2	15,2	13,2	28
30									23,2	22,6	21,9	21,2	19,6	17,8	16,2	14,5	12,7	30
32									11,7	20,6	19,9	19,7	18,2	16,7	15,2	13,8	12,1	32
34										18,9	18,1	18,8	17	15,6	14,3	13,1	11,6	34
36										15,7	16,9	17,3	15,6	14,6	13,5	12,5	11,1	36
38											16,3	15,9	14,6	13,7	12,7	11,8	10,6	38
40											14,8	14,6	13,7	12,8	11,9	11,2	10,2	40
42												13,5	12,5	11,9	11,2	10,6	9,8	42
44												12,4	11,8	11,1	10,5	10	9,4	44
46												8,8	11,4	10,5	9,9	9,5	9	46
48													11	9,9	9,2	9	8,6	48
50														8,6	9,1	8,7	8,5	50
52															8,6	8,3	8	52
54															8,3	7,9	7,5	54
56																4,4	7,5	56
58																	6,9	58
60																	5	60
62																	6,5	62
64																	6,3	64
66																	4,7	66
68																	5,2	68
70																	4,7	70
72																	3,8	72
74																	1,5	74

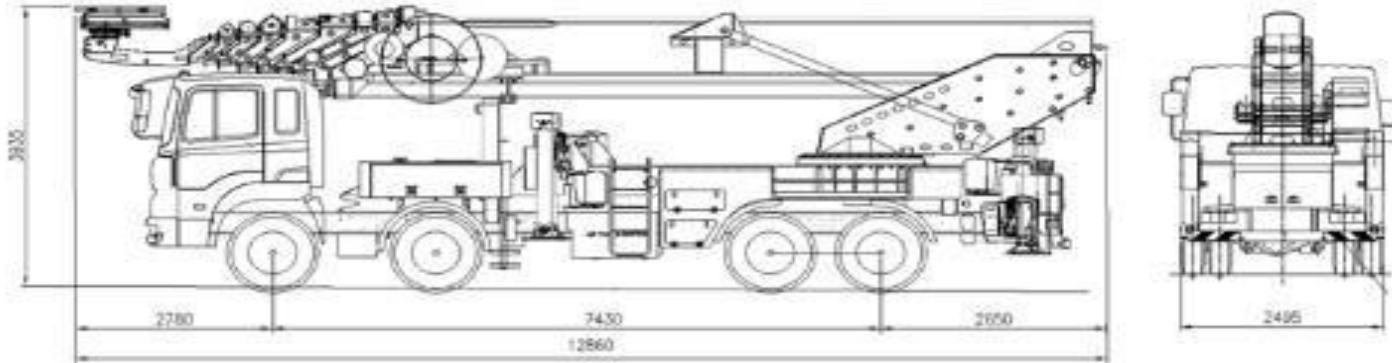
¹ nach hinten - over rear - en arrière - sul posteriore - hacia atrás - стерна позадку назад

L_240_001_00001_00_000 / 00301_00_000

5. PLAN FOR EQUIPMENT USE



Sky 19.5 Ton (75m)



<i>Classification</i>	<i>Specification</i>	<i>Remarks</i>
<i>weight</i>	<i>19.5 Ton</i>	
<i>Car way</i>	<i>12.9 M</i>	
<i>Car height</i>	<i>3.9 M</i>	
<i>Vehicle width</i>	<i>2.5 M</i>	
<i>Maximum height</i>	<i>75 M</i>	

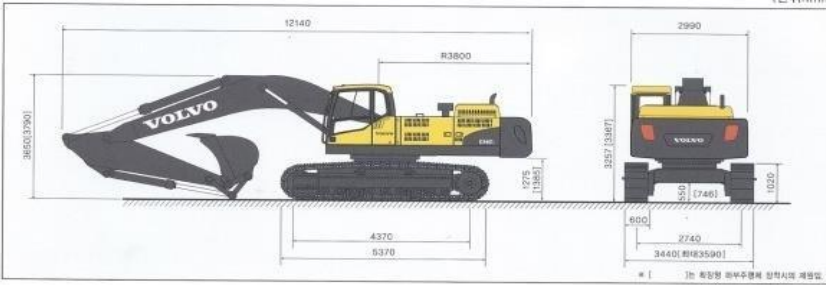
5. PLAN FOR EQUIPMENT USE



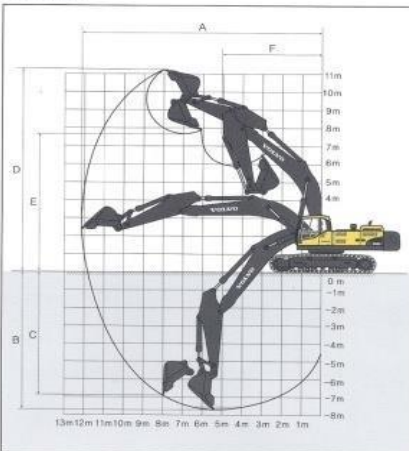
Excavators

EC460C

■ 외형규격



■ 작업범위



■ 주요제원

■ 운전중량	kg	46500~49800
■ 버켓용량 (ISO, 산적)	m ³	2.06~2.8(옵션)
■ 연진		
모 델		볼보 D12D
형 식		수냉식 6기통 대별
정격출력	ps/rpm	333/1800(Net)
최대토크	kg.m/rpm	347/1800(Gross)
연료탱크용량	ℓ	685
■ 유압		
형 식		가변용량형 피스톤펌프*2, 기어펌프*1
도출압 (상시/승압)	kg/cm ²	330/360
필트도출유량	ℓ / min	2×360
■ 성능		
선최속도	rpm	8.8
주행속도 (1단/2단)	km/h	3.2/5.1
굴삭력 (버켓/경)	ton	23.4 (25.6)/20.1(21.9)
동전능력 (무부하)	°	35
견인력	ton	34.5
집지압	kg/cm ²	0.79

* 상기 제원은 표준점이 제한되어 용량계산을 위해 예고 없이 변경될 수 있음.-F, * ()는 옵션시 제원임.

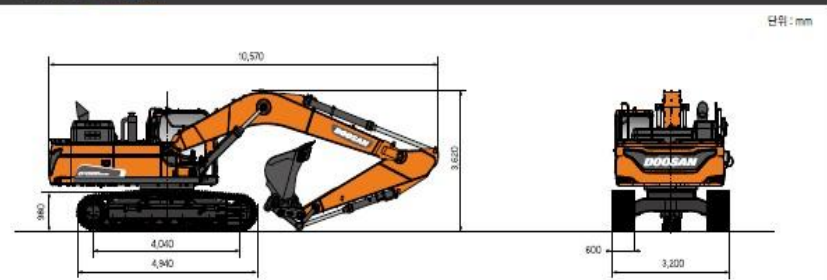
■ 용도별 선택장치 사양

항 목	표준 (길이: 볼 17.0m)	수확량 (0.9m)			대형굴삭용 (8.3m/2.55m)		
		숏암 (12.5m)	중화암 (3.3m)	롱암 (3.9m)	수확량 (0.9m)	수확량 (0.9m)	수확량 (0.9m)
A 최대 굴삭반경	mm	11340	12040	12530	16130	10930	
B 최대 굴삭깊이	mm	6920	7720	8670	11540	6580	
C 최대 수직 굴삭깊이	mm	6460	6920	7380	-	6100	
D 최대 굴삭높이	mm	10860	11010	11190	13710	10600	
E 최대 덤프높이	mm	7420	7630	7820	10300	6970	
F 피스 회전반경 (천방)	mm	5170	5090	5050	6520	4780	
비 고		OPT	표 준	OPT	모 래용	대 량용	

항목	종류	표준버켓 (m ³)	광석용버켓	굴삭용버켓	모래용버켓	대량용버켓
버켓용량 (SAE, 산적)	(m ³)	2.06	2.0	2.46	1.64	2.6
용 도		일반굴삭용	원석상자용	경안용	모래용	대량상자용
선택암	숏암 (2.6m)	●	●	●	○	●
	표준암 (3.2m)	●	●	○	○	×
	롱 암 (3.9m)	○	×	×	○	×
유퍼용암 (5.0m)	×	×	×	●	×	
비 고		일반	OPT	OPT	OPT	OPT

DX300

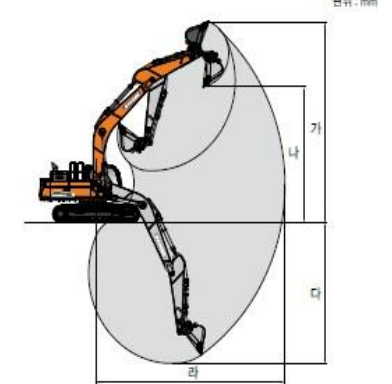
본체규격 Dimension



제원 Specifications

작업 범위도 Working Range

구분	단위	DX300LC-5K	
장비 중량	ton	32 (31.5)	
버켓 용량	m ³	1.27 ~ 1.5	
연진	모 델	DOOSAN DL08P	
	정격출력	ps / rpm	275 / 1800
	최대토크	kg.m / rpm	180 / 1300
	도출압 (작업/주행)	kg / cm ²	300(370) / 300
유압	병용용량	L / min	2 × 247
	최대굴삭력 (버켓/경)	ton	8.9(20.0) / 13.2(13.9)
성능	최대견인력	ton	31.4
	주행속도	km/hr	5.2 / 3.0
	선최속도	rpm	9.9
	동전능력	도	30
수송저항	전장	mm	10,570
	전폭	mm	3,200
	전고	mm	3,620
	후단선회반경	mm	3,200
슈목	최저지상고	mm	500
	집지압	kg / cm ²	0.66 (0.60)
	트랙중심간거리	mm	2,600
트랙중심간거리	mm	4,040	
연료탱크 용량	L	500	
작동유량크 용량	L	280	
요소수탱크 용량	L	70	



구분	단위	폭 6.240m		폭 10 m
		암 3.1 m	암 2.85 m	
최대 굴삭높이(가)	mm	10,649 (10,325)	10,336 (9,990)	14,386 (14,196)
최대 덤프높이(나)	mm	6,971 (7,280)	6,690 (6,996)	11,766 (11,975)
최대 굴삭깊이(다)	mm	7,610 (7,306)	7,360 (7,065)	14,036 (13,306)
최대 굴삭반경(라)	mm	10,328 (10,725)	10,720 (10,415)	9,770 (17,510)

6. PROGRESS CONTROL PLAN



Progress control plan

<i>Progress meeting</i>	<i>Management plan</i>
<ul style="list-style-type: none">• <i>Daily progress meeting</i><ul style="list-style-type: none">- <i>held every day</i>- <i>Target person: Site owner and safety manager / construction manager</i>- <i>Review of today's work progress and work schedule</i>- <i>Safety matters and safety management plan</i>• <i>Weekly progress meeting</i><ul style="list-style-type: none">- <i>held every week</i>- <i>Applicant: Dongkuk Steel Works, Facility Purchase,</i>- <i>Construction manager, safety manager / construction manager</i>- <i>Progress of the week's work and review of the borrowing work plan</i>- <i>Special safety matters and quality matters</i>	<ul style="list-style-type: none">• <i>Construction schedule management</i><ul style="list-style-type: none">- <i>Detailed schedule verification and thorough management of process progress status</i>- <i>Problem monitoring and quick response</i>- <i>In case of trouble, we can share and plan quickly</i>- <i>Preventing delay by thorough process control</i>- <i>Establish countermeasures against delay schedule</i>- <i>Minimization and simplification of inter-process interference by pre-process identification.</i>

7. SAFETY MANAGEMENT PLAN



Safety management plan

○ GOAL

- *No-accident, no-accident field realization*
- *Realization of safe work site by performing standard work*
- *Happy construction site realization*

○ SITE-Centerised management plan

- *Notification of harmful risk prevention plan before construction*
- *In order to prevent collapse by random demolition, design review, demolition process establishment and compliance*
- *Prevent falling and proportional accident of demolished articles*
- *Equipment safety inspection, field access control in the operation of large equipment,*
- *Reheating Furnace, Roughing & Finishing Mill*
- *No. 1, 2 Cooling Bed, CCTV is installed to improve workers' insecure behavior / status immediately*
- *Prevention of explosion by fire and energizing gas caused by oxygen lance used mainly for demolition*
- *Prevention of fire and gas poisoning during construction of gas pipes*
- *Fire prevention of flammable waste (Tar, etc.) from demolition*
- *Prevention of electric shock by electric wire disconnection and current check before demolition*
- *Emergency action plan (emergency communication system)*

7. SAFETY MANAGEMENT PLAN

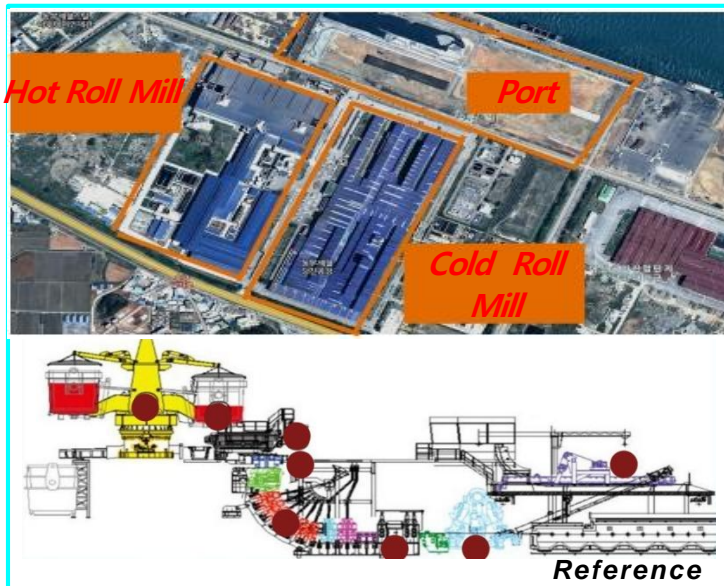


CCTV Operation

- *CCTV installed at the center of the flow line to immediately improve insecure behavior / status of workers*
 - CCTV: 6~8 units, Monitor: 2 units (site office)
 - Immediate improvement through site safety manager and radio when discovery of unsafe behavior

- *System configuration*

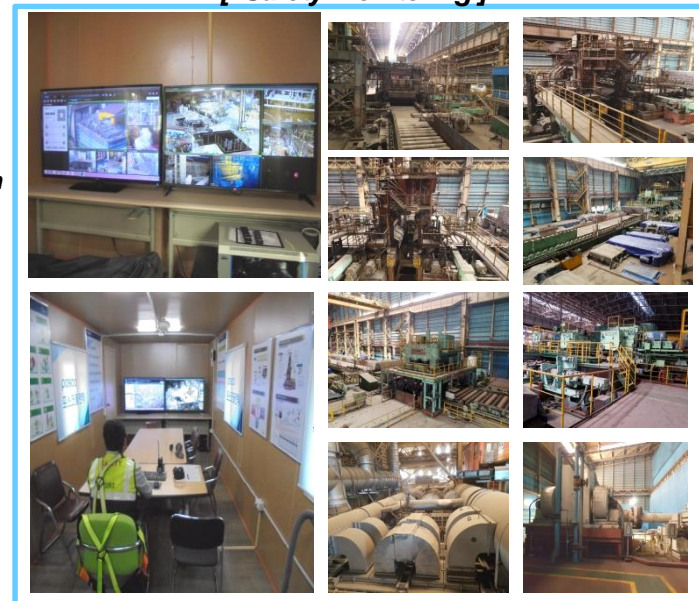
[Scene]



Field Information



[Safety monitoring]



Feedback



7. SAFETY MANAGEMENT PLAN



Fire / Explosion Management

Potential Risks	Countermeasures
Fire / explosion hazard due to energized gas	Exit to the gas area Wear all worker probes
Fire / burn risk due to fire work	Rescue / First Aid Kit



Gas detection

- Hydrogen gas
- Carbon monoxide



Multi gas detection

- Dongkuk Steel
- Supervisor
- Constructor
- Worker



Gas detection standard

- Less than 1% hydrogen
- Less than 30 ppm of CO
- Oxygen 20 to 21%



Fire work standard

- Fire extinguish
- Measures to prevent wastes
- Fire monitor placement

7. SAFETY MANAGEMENT PLAN



Choking / Gas Poisoning Management

Potential Risks	Countermeasures
<i>Risk of suffocation / poisoning due to gas generated in closed space oxygen scavenging</i>	<i>Access to enclosed spaces All worker probes Wear</i>
<i>Risk of suffocation / poisoning by energized gas in piping during dismantling of closed space piping</i>	<i>Inspect piping energizing gas, oxygen mask, emergency equipment box</i>



Gas detection

- Hydrogen Gas
- Carbon monoxide
- Oxygen



Multi gas detection

- Dongkuk Steel
- Supervisor
- Constructor
- Worker



Gas detection standard

- Less than 1% hydrogen
- Less than 30 ppm of CO
- Oxygen 20 to 21%



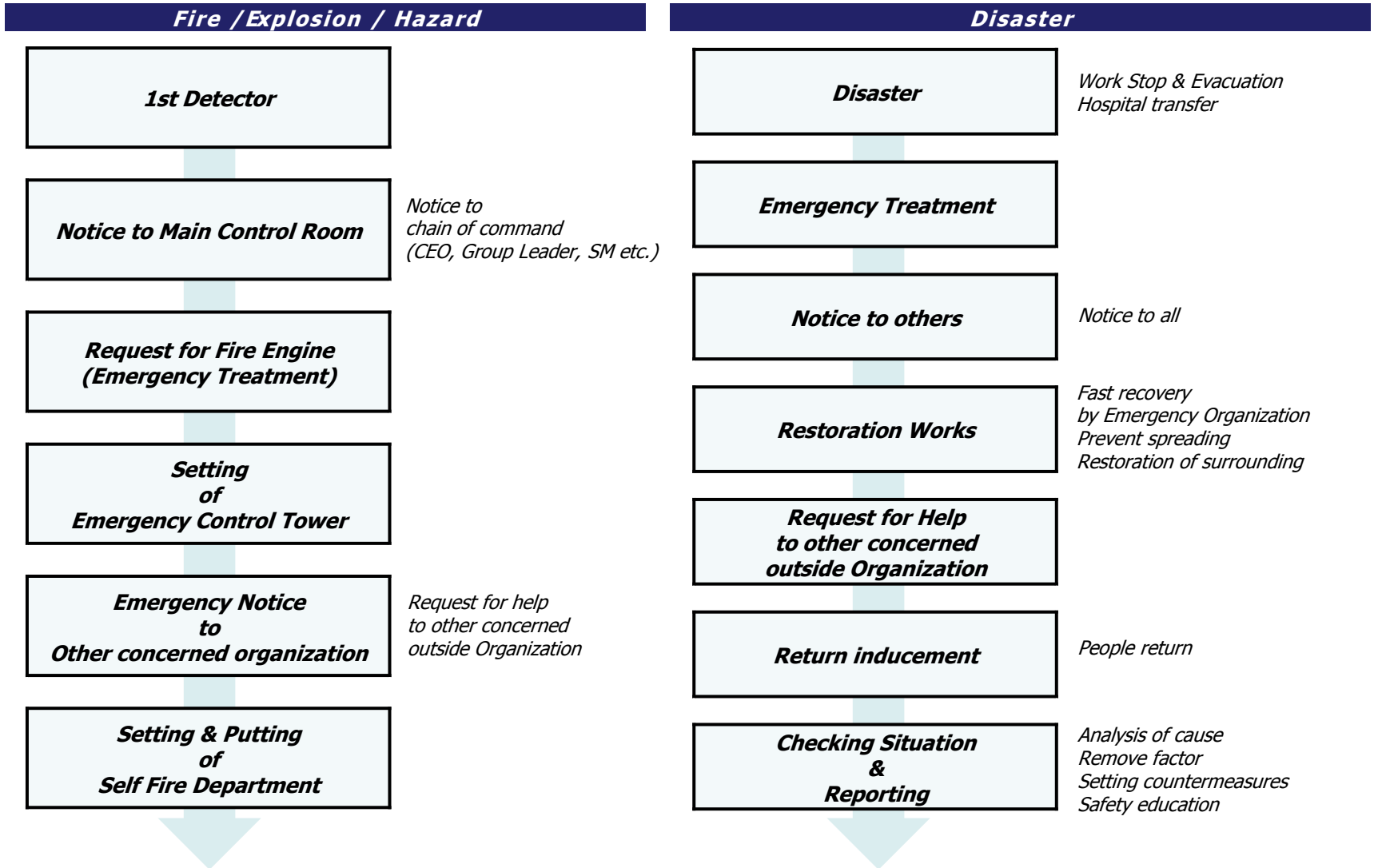
First aid kit

- Oxygen Mask

7. SAFETY MANAGEMENT PLAN



Emergency action plan (emergency communication system)



8. ENVIRONMENTAL MANAGEMENT PLAN



Environmental Management

Environmental Law Violation Zero

- Minimization of waste generation and discharge
- Improved worker environment mind
- Status and countermeasures against environmental pollution sources

<i>Division</i>	<i>Occurrence</i>	<i>Mitigation measures</i>	<i>Related Laws</i>	<i>Remarks</i>
Fugitive dust	<ul style="list-style-type: none"> • To remove R/C structure • Remove storage tank and transportation facilities • Formation of construction vehicle and equipment • Slag recovery 	<ul style="list-style-type: none"> • Water cleaning before remove • Setting water spray machine at site • Anti-scattering cover • Installation fence for anti-scattering 	<ul style="list-style-type: none"> • Clean Air Conservation Act 	
Designated waste	<ul style="list-style-type: none"> • Tar inside COG duct • Wasted oil having PCBs (Transformer) • Wasted Acid & Alkali 	<ul style="list-style-type: none"> • Using airtight container • Designated storage house • Paved concrete 	<ul style="list-style-type: none"> • Wastes Control Act 	
Construction / general waste	<ul style="list-style-type: none"> • Wasted concrete & ascon • Wasted lagging • Wasted synthetic resins 	<ul style="list-style-type: none"> • Sectionalized remove among Waste material & Scrap 	<ul style="list-style-type: none"> • Construction waste notice • Allotment system for Waste 	
Wastewater	<ul style="list-style-type: none"> • Water spray for Anti-scattering • Surface cleaning of Equipment 	<ul style="list-style-type: none"> • Waste drain and pit 		

9. MAJOR REFERENCE FOR DISMANTLING WORKS



Recent Reference list

<i>PJT Name</i>	<i>Period</i>	<i>Client</i>
<i>Pohang No.2 Steel Manufacture Equipment 2nd Construction- Demolition Work</i>	<i>POSCO E&C</i>	<i>04.02-04.02</i>
<i>Pohang No.1 Cold Rolling Mill (합리화) 5th Construction - Demolition Work</i>	<i>POSCO E&C</i>	<i>04.02-05.03</i>
<i>Gwangyang Hydroforming Installation 1st Construction -Demolition Work</i>	<i>POSCO E&C</i>	<i>04.04-04.05</i>
<i>Pohang Electrical Steel (신예화) 2nd Construction - Demolition Work</i>	<i>POSCO E&C</i>	<i>04.04-04.11</i>
<i>Pohang No.2 Hot Rolling Mill (신예화) 2nd Construction - Demolition Work</i>	<i>POSCO E&C</i>	<i>04.08-05.06</i>
<i>Pohang No.1 Wire Rod (합리화) 1st Construction - Demolition Work</i>	<i>POSCO E&C</i>	<i>04.10-05.05</i>
<i>Gwangyang Hydroforming Equipment Installation 4th Construction - Demolition Work</i>	<i>POSCO E&C</i>	<i>05.01-05.03</i>
<i>Pohang No.2 Continuous Casting Mill No.1 M/C (합리화) 4th Construction - Demolition Work</i>	<i>POSCO E&C</i>	<i>05.01-05.02</i>
<i>Gwangyang No.1 Steel Manufacture Chartering Prepare Equipment (합리화) 2nd Construction - Demolition Work</i>	<i>POSCO E&C</i>	<i>05.03-05.10</i>
<i>Pohang No.1 Wire Rod (합리화) 2nd Construction - Demolition Work</i>	<i>POSCO E&C</i>	<i>05.03-06.02</i>
<i>Pohang No.2 Thick Plate (신예화) 4th Construction - Demolition Work</i>	<i>POSCO E&C</i>	<i>05.04-05.07</i>
<i>Pohang Electrical Steel (신예화) 2 Level NO.3 ACL 1st Construction - Demolition Work</i>	<i>POSCO E&C</i>	<i>05.06-05.08</i>
<i>Gwangyang 1 PCM (합리화) 3rd Construction - Demolition Work</i>	<i>POSCO E&C</i>	<i>05.07-06.05</i>

9. MAJOR REFERENCE FOR DISMANTLING WORKS



Recent Reference list

<i>PJT Name</i>	<i>Period</i>	<i>Client</i>
<i>Pohang No.2 Steel Manufacture Installation 3rd Construction – Demolition Work</i>	<i>POSCO E&C</i>	<i>05.04–05.09</i>
<i>Pohang No.2 Cold Rolling Mill PCM Increase Ability 8th Conctruction</i>	<i>POSCO E&C</i>	<i>06.12–07.03</i>
<i>Songdo New Town Convention Center – Temporary Construction</i>	<i>POSCO E&C</i>	<i>07.05–08.02</i>
<i>Gwangyang No.3 Blast Furnace (1차개수) Dismantling & Demolition Work</i>	<i>POSCO E&C</i>	<i>07.10–07.12</i>
<i>Gwangyang No.1 Cold Rolling Mill RCL (합리화) 1st Construction – Demolition Work</i>	<i>POSCO E&C</i>	<i>08.05–08.10</i>
<i>Pohang New Steel Manufacture Test Continuous Casting Mill Relocation 5th Construction – Demolition Work</i>	<i>POSCO E&C</i>	<i>08.07–08.10</i>
<i>Pohang New PGL 1st Construction Dismantling & Demolition Work</i>	<i>POSCO E&C</i>	<i>09.08–10.03</i>
<i>Gwangyang No.4 Blast Furnace (1차개수) Dismantling & Demolition Work</i>	<i>POSCO E&C</i>	<i>08.07–08.08</i>
<i>Pohang New PGL 2nd Construction Dismantling & Demolition Work</i>	<i>POSCO E&C</i>	<i>09.09–10.08</i>
<i>Pohang EGL Specialized Production Equipment 3rd Construction</i>	<i>POSCO E&C</i>	<i>09.08–10.03</i>
<i>Pohang EGL Specialized Production Equipment 4th Construction</i>	<i>POSCO E&C</i>	<i>09.09–10.03</i>
<i>Pohang EGL Specialized Production Equipment 5th Construction</i>	<i>POSCO E&C</i>	<i>09.11–10.03</i>

9. MAJOR REFERENCE FOR DISMANTLING WORKS



Recent Reference list

<i>PJT Name</i>	<i>Period</i>	<i>Client</i>
<i>Gwangyang No.1 EGL Equipment Dismantling & Demolition Work</i>	<i>POSCOPLANTEC</i>	<i>10.03 – 11.06</i>
<i>Pohang New PGL 3rd Construction</i>	<i>POSCO E&C</i>	<i>10.05 – 11.03</i>
<i>Pohang New Steel Manufacture Service/ Power Distribution (합리화) 7th Construction Structure Demolition Work</i>	<i>POSCO E&C</i>	<i>10.05 – 10.08</i>
<i>Pohang FINEX No.3 New Site Occupancy Facilities Relocation Work</i>	<i>POSCO E&C</i>	<i>10.08 – 11.03</i>
<i>Pohang New Port No.1 Dock #14 선석 Rebuild Work – Structure Dismantling Work</i>	<i>POSCO E&C</i>	<i>10.10 – 11.02</i>
<i>Chujado Sinyang Port Breakwater Constant Structure Demolition Work</i>	<i>POSCO E&C</i>	<i>12.11 – 13.01</i>
<i>Seoul Combined Cycle Power Plant No.1/2 Civil Engineering and Construction Reinforced Concrete Breaking and Crushing</i>	<i>POSCO E&C</i>	<i>13.12 – 14.02</i>
<i>POSCO Energy Incheon LNG Combine Cycle Power Plant No.1/2 HRSG Demolition Work</i>	<i>POSCOENERGY</i>	<i>15.04 – 16.05</i>
<i>Uttam – Pohang No.1 FINEX Equipment Relocation & Dismantling Project</i>	<i>UTTAM WARDA</i>	<i>16.01 – 19.05</i>
<i>Uttam – Gwangyang CEM Equipment Relocation & Dismantling Project</i>	<i>UTTAM WARDA</i>	<i>16.01 – 19.05</i>
<i>Pohang Dongkuk No.2 Plate Mill Equipment Relocation & Dismantling Project</i>	<i>Seokyung Engineering Co., Ltd.</i>	<i>17.06 –</i>
<i>Sangju, Woongjin Poly Crystal Silicone Equipment Dismantling Project</i>	<i>Vietnam National Enterprise</i>	<i>18.04 –</i>

10. ROUGH MAP TO COMPANY



Directions

100m from Gate 2 of Mapo Station



- B** 간선버스
- 160 (도봉산 ↔ 온수동)
 - 260 (중랑 차고지 ↔ 온수동)
 - 261 (장위동 ↔ 여의도)
 - 263 (마장동 ↔ 여의도)
 - 600 (광화문 ↔ 온수동)

- 지선버스
- 7013 (은평 차고지 ↔ 남대문 시장)
 - 7016 (중랑 차고지 ↔ 상명대)
 - 7011 (홍은동 ↔ 여의도)

- B** 공항버스
- 605
 - 605-1

JEIL ENG CONSTRUCTION Co., Ltd

#911, B-dong,
 53 Mapodaero Mapogu, Seoul
 Tel : 02 - 393 - 7875~7
 Fax : 02 - 365 - 1839

<http://www.jeileng.kr>

11. MAJOR CLIENTS



DAELIM

